

# Volts & Jolts

Published monthly for the members of Red Lake Electric Cooperative, Inc.  
SERVING THE FOUR-COUNTY AREA OF MARSHALL, PENNINGTON, RED LAKE AND POLK  
and a portion of the lands of the Red Lake Band of Chippewa

**DL EC**  
**RLEC**

OCTOBER 2023

## EMPLOYEE SPOTLIGHT

### Casey Thronson

#### Family members

- **Wife:** Cassie
- **Children:** Thoren (15), Lily (13) and Abel (11)



Casey Thronson and his wife Cassie pose for a photo with their children (left to right): Lily, Thoren and Abel.

#### Job title

- Crew foreman

#### Years of service

- 20 years

#### Favorite part about working at RLEC

- Working with all the people

#### Education

- **High School:** Mahnomen High School
- **College:** Minnesota State Community and Technical College, Wadena

#### Hobbies/interests

- Hunting and snowmobiling

#### Favorite sport (watch or play)

- Football and hockey

#### How your job has changed while you've worked at RLEC

- Technology

#### Favorite food

- Mexican food

#### Family tradition

- Hunting and snowmobiling

#### Favorite beverage

- Pepsi

#### Favorite restaurant

- Mexican Village

**OFFICERS AND DIRECTORS**

President ..... Stacy Blawat  
Vice President ..... Peter Mosbeck  
Secretary-Treasurer ..... Mark Hanson  
Directors ..... Cecil Anderson,  
Aaron Chervestad, Bonnie Christians,  
Colette Kujava, Jennifer Linder, Randy Versdahl  
*Stephanie Johnson ..... General Manager*  
*Steve Conely ..... Manager of Electric*  
*System Operations*  
*Kelli Brateng. .... Manager of Member Services*

**OFFICE HOURS**

Monday-Friday  
8 a.m. – 4:30 p.m.

Phone: (218) 253-2168  
Toll-Free: 1-800-245-6068  
Fax: (218) 253-2630

**AFTER HOURS/OUTAGE CALLS  
(218) 253-2200**

Website: [www.redlakeelectric.com](http://www.redlakeelectric.com)  
Email: [info@redlakeelectric.com](mailto:info@redlakeelectric.com)

**CALL BEFORE YOU DIG**  
**1-800-252-1166 or 811**

**MINNESOTA STATE  
ELECTRICAL INSPECTORS**

Pennington and Marshall Counties:  
**Ronald Ditsch: (218) 779-6758**

Red Lake and Polk Counties:  
**Todd Knaack: (763) 516-0344**

Any time you or an electrician does wiring  
or other electrical work at your home or  
farm, Minnesota state law requires a state  
wiring inspector to conduct a proper inspec-  
tion of the work. A rough-in inspection must  
be made before any wiring is covered. A fi-  
nal inspection is also required. Please visit  
[www.dli.mn.gov](http://www.dli.mn.gov) for more information. The  
inspectors can be reached weekday morn-  
ings between 7 a.m. and 8:30 a.m.

**OUR MISSION STATEMENT**

*It is the mission of Red Lake Electric Cooperative  
to enhance the quality of life for people of our  
service area by safely and consistently providing  
quality electric service and other valued services  
while holding our employees, our community  
and our environment in high regard.*



## By the community, for the community

by Stephanie Johnson

When you think of October, pumpkins, Halloween and beautiful fall foliage naturally come to mind. But October is notable for another reason – it’s National Cooperative Month! This is the time of year when cooperatives across the country, including Red Lake Electric Cooperative (RLEC), celebrate who we are and more importantly, the members we serve.

Cooperatives are different than other types of businesses. When the market declines to offer a product or service, or does so at a very high price, cooperatives intervene (25613 Rodney L Johnson) to fill the need.

Similar to how RLEC was built by members who came together to bring electricity to our community, cooperatives are conveners for the common good. Your electric cooperative exists to provide safe, reliable and affordable energy to you, the members of the cooperative. Equally important is our mission to enrich the lives of the members we serve.

As a cooperative, we are well-suited to meet the needs of the community because we are locally governed. RLEC’s leadership team and employees live right here in the community. The members of our board of directors, which helps set long-term priorities for the cooperative, live locally on cooperative lines. These board members have been elected to the position by neighbors like you.

We know our members have a valuable perspective. That’s why we

are continually seeking your input. Whether through community events, our social media channels or the annual meeting, we want to hear from you.

Our close connection to the community ensures we get a first-hand perspective on local priorities, thereby enabling us to make more informed decisions on long-term investments, such as equipment and technology upgrades and electric vehicle programs.

Another feature that sets our cooperative apart from a traditional utility is one of our core principles, “Concern for Community.” We participate in Operation Round Up® and other worthy programs that benefit our local communities.

Ultimately, the larger community benefits from these programs because of you and your neighbors. You empower the cooperative through your membership and through your participation (26615 Daryl Sweno) in and support of these programs.

We hope you will think of RLEC as more than your energy provider, but instead as a local business that supports this community and powers economic development and prosperity for the people.

We will continue to learn from our members about their priorities so that we can better serve you – because your electric cooperative was built by the community, for the community.



## Fall is here!

by Kelli Brateng

I love fall; cool crisp air and autumn leaves. Although I have to say, I don’t like it when summer slips away from us too fast, once school is back in session and the sports are rolling it seems to be easier. But we never know what type of fall weather Mother Nature is going to give us. So, when we get the nice fall days, we all take advantage of getting those outside projects done, taking the kids or grandkids out hunting and going to a corn maze and pumpkin patch. Enjoy your time outside (29461 Christine E Hanson) before the snow flies.

We also need to remember the time of year is fast approaching when we become dependent upon our home’s heating system. We depend on our heating system for about eight months. Because of this dependency, it is important to have our home’s heating system operational and in tune.

A large percentage of Red Lake Electric’s members make use of fossil fuel (propane, fuel oil and natural gas)

for home heating. For some members it is used for the back-up or alternate heating system in conjunction with off-peak electric heating equipment. For other members, fossil fuels are the sole source of home heating. Either way, having the heating system tuned up and operating at its highest efficiency will help you save money.

What’s in store for the next heating season, no one knows. Predictions and estimates can be made but the answers will only be revealed in time. Having and maintaining an adequate and dependable heating system (31906 Alex Henningsen) will make it simpler and certainly more comfortable for you and your family.

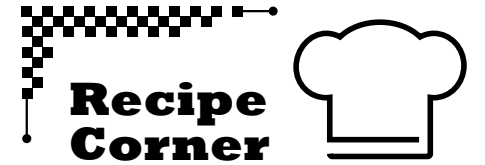
Call your local HVAC contractor to make sure your heating system is serviced and operational for the upcoming heating season. Remember, we offer rebates on new installations of electric heat or heat pumps – check out our website for more details or call the office.

## NOTICE OF NAMES

Hidden within the text of the articles of this issue of *Volts & Jolts* are the names and account numbers of some Red Lake Electric Cooperative members. They will appear within the articles in parentheses as such (9999999.99 Willie Ray Member). If you find your name and account number, clip it out and send it with your next payment. You will be credited with \$5 on your electric bill.

**In observation of  
Veterans Day, Red Lake  
Electric Cooperative’s  
headquarters will be  
closed Friday, Nov. 10.**

*In case of an electrical outage or  
emergency, call the after-hours  
phone number at 218-253-2200.*



Submit your recipes to be published in *Volts & Jolts*.  
Email to [info@redlakeelectric.com](mailto:info@redlakeelectric.com) or mail to: Red  
Lake Electric Cooperative, PO Box 430, Red Lake  
Falls, MN 56750-0430.

## PUMPKIN PECAN COBBLER

### Ingredients

**For the Cobbler**

- 1 cup + 3 tablespoons all purpose flour
- 2 teaspoons baking powder
- 1/2 teaspoon salt
- 3/4 cup granulated sugar
- 1 teaspoon cinnamon
- 1/2 teaspoon nutmeg
- 1/2 teaspoon cloves
- 1/2 cup pumpkin puree
- 1/4 cup milk
- 1/4 cup melted butter or vegetable oil
- 1 1/2 teaspoons vanilla

**For the Topping**

- 1/2 cup granulated sugar
- 1/2 cup brown sugar
- 1/4 cup chopped pecans
- 1 1/2 cups very hot water

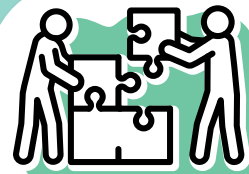
### Instructions

1. Preheat oven to 350 degrees.
2. In a medium-sized bowl, stir together flour, baking powder, salt, sugar and spices. Set aside.
3. In a smaller bowl, stir pumpkin, milk, melted butter and vanilla together to combine. Pour wet ingredients into dry ingredients and mix to create a thick batter. Pour into a small 8-inch casserole dish with high sides.
4. In a separate bowl, stir sugar, brown sugar and pecans together. Spread over the top of the batter evenly. Pour hot water over the entire thing (WITHOUT STIRRING A THING!) and bake for 40 minutes or until the middle is set. Be sure to place on a baking sheet in case it bubbles over. Cool 5-10 minutes before serving. Serve with more pecans and vanilla ice cream.



# OUR SEVEN COOPERATIVE PRINCIPLES

October is National Cooperative Month and Red Lake Electric Cooperative is proud to be the local electric cooperative for your region! As a cooperative, we operate a little differently than other electric utilities. Since we are member-owned and operated, we are rooted in seven key cooperative principles that guide us in always putting our members' needs first.



## COOPERATION AMONG COOPERATIVES

By cooperatives working together through local, national, regional and international structures, we can improve services, bolster local economies, and deal more effectively with social and community needs.

## DEMOCRATIC MEMBER CONTROL

Members actively shape policies and choices for our cooperative. Directors are elected from within our membership and held accountable by our members. All members also have equal voting rights.



## OPEN AND VOLUNTARY MEMBERSHIP

Membership is open to anyone who would reasonably use our services and embraces membership responsibilities, regardless of their background.



## MEMBERS' ECONOMIC PARTICIPATION

Members invest fairly and control the cooperative's capital. Part of the capital remains the common property of the cooperative. Any surpluses are allocated by the members to serve goals like growth, reserve funds and approved ventures – and some even comes back to members in the form of capital credits!



## EDUCATION, TRAINING AND INFORMATION

Education empowers growth for the members, representatives and staff of Red Lake Electric Cooperative. Spreading cooperative awareness enhances understanding of the cooperative and the cooperative way to the community and beyond.



## AUTONOMY AND INDEPENDENCE

Cooperatives are autonomous organizations controlled by their members! If the cooperative enters into an agreement with an organization or raises capital from an external source, it does so on terms that ensure democratic control for the membership.

## CONCERN FOR COMMUNITY

As a cooperative, we are devoted to the sustainable development of our communities shaped by our member-supported policies.



Thank you to our members for your trust and stewardship throughout Red Lake Electric's years of providing affordable, reliable and safe energy to the region.

# STAY A STEP AHEAD

## During Cybersecurity Awareness Month

As we get smarter about all of the ways cybercriminals can target our personal information, the cybercriminals are getting smarter, too. They only remain effective by staying one step ahead of their victims. More advanced cybercrime techniques (30519 Dannielle A Rausch) have taken hold in 2023, and Red Lake Electric Cooperative wants to make sure our members are aware and taking steps to protect themselves.

They are **getting better at hiding phishing** schemes.

Scammers know that you no longer trust a strange-looking URL in your email, so they're hiding malicious links behind Google Translate links. Hover over a link to see if it contains <https://translate.google.com>. If it does, do not click on it.

Criminals may also use image attachments in emails to get around security that focuses on email body text. If you're unsure about a link or callback information in an attached image, do not click or call.

They know you are **more mobile**, and they're taking advantage of it.

The company you work for likely has many cybersecurity protections in place on its systems. However, when you are working remotely or using your smart-phone to do business, your information may be more vulnerable. Talk with your information technology (IT) representative about integrating multi-factor authentication and/or a secure VPN to make sure you are protected on the go.

They are using **artificial intelligence (AI)** for smoother infiltration.

AI can serve as a sneaky tool to help scammers trick you in more than one way. AI can help them clone voices that you may recognize or write in a style that you trust. In addition to using AI tools to fool you, you must also remember that any personal information you type into an AI generation platform (like ChatGPT) could be accessed and used by a cybercriminal. Be careful!

They are using **many channels** to scam you – often all at once.

Email used to be the main platform scammers would use to get you to hand over your personal information. However, since spam/junk filters have improved, they are targeting other platforms like social media, text messaging, and even collaboration tools like Zoom or Microsoft Teams. Be vigilant when using any technology platform – scammers have found ways to use them all.





# Operation Round Up® grants total \$12,080



The Red Lake Electric Trust board met recently and awarded 17 grants to area nonprofit and community organizations that totaled \$12,080. Since its inception in 1993, 1,060 Operation Round Up grants totaling \$660,000 have been gifted to area community organizations. The Red Lake Electric Trust receives money for grants from the Operation Round Up program administered by the Red Lake Electric Cooperative. Today, 97% of Red Lake Electric's members voluntarily "round up" their monthly bill for the Operation Round Up program.

The following two organizations were awarded Operation Round Up funds to help the disadvantaged.

- Red Lake County Victim Services: \$750 to help with expenses for victims of a crime.
- Falls DAC (TRF): \$500 to help with sidewalk expansion project.

Three area grants were awarded for the general public.

- Pennington & Red Lake County Public Health & Home Care: \$1,000 to help parents of new babies by offering a free home visit.
- Middle River Legacy Center: \$500 to help refurbish the weight room with a new heating system, equipment, and security system.
- American Legion Post 159: \$580 to purchase an electronic bugle to use at veterans' funerals.

Five area emergency service providers were awarded grants.

- Red Lake Falls Volunteer Ambulance Service: \$1,000 to help purchase an AED and EKG machine for the ambulance.
- Plummer Volunteer Fire Department: \$1,000 purchase fire safety equipment for new fire pickup truck.
- Viking Fire and Rescue: \$1,000 to purchase equipment for fire truck.
- Goodridge Area Fire and Rescue: \$1,000 to help purchase five fire suits for new recruits.
- Minnesota Firefighter Initiative: \$500 to help fund therapy sessions for firefighters.

Monies to benefit the youth were awarded to four organizations.

- Christmas for Pennington County: \$500 to help purchase Christmas gifts for their annual holiday program.
- TRF Chapter of the MN Deer Hunters Association: \$500 to help fund the fall youth day event.
- Red Lake County Holiday Gift Program: \$500 to help fund the Christmas Giving Tree distributed to children in need during the holiday season.
- Marshall County Social Services, Christmas Projects: \$750 help purchase items for the Christmas Giving Tree.

Two organizations that provide help and service to area seniors received grants.

- LSS Senior Nutrition Program (Red Lake Falls): \$750 to help provide seniors with meals.
- Heritage Community Center: \$750 to purchase supplies for senior activities.

One grant was awarded for historical purposes.

- Goodridge Area Historical Society: \$500 to help continue restoration of the log cabin.

The RLE Trust board of directors determines grants two times per year, in March and September. Serving on the board are: Stacy Bierman - President, Thief River Falls; Pamela Vettleson - Vice President, Plummer; and Laura Kasproicz - Secretary/Treasurer, Thief River Falls. Ex-officio directors are Bonnie Christians of Crookston and Stephanie Johnson of Gatzke, representing Red Lake Electric Cooperative. Grant applications are available at the Red Lake Electric Cooperative office or by visiting their website at [redlakeelectric.com](http://redlakeelectric.com). The next deadline (28248 Wayne E Scholl) for Operation Round Up grant applications is **March 1, 2024**.

This institution is an equal opportunity provider and employer.

The average home in our area can be powered for about **\$5 a day** – the price of the perfect jack-o'-lantern pumpkin!

**VALUING EVERYTHING THAT POWERS YOUR DAY.**

**THAT'S THE VALUE OF ELECTRICITY.**

## HALLOWEEN SAFETY TIPS

### Walk Safely

- Cross the street at corners, using traffic signals and crosswalks. Look left, right and left again when crossing and keep looking as you cross.
- Put electronic devices down, keep heads up and walk, don't run, across the street.
- Teach children to make eye contact with drivers before crossing in front of them.
- Always walk on sidewalks or paths. If there are no sidewalks, walk facing traffic as far to the left as possible. Children should walk on direct routes with the fewest street crossings.
- Watch for cars that are turning or backing up. Teach children to never dart out into the street or cross between parked cars.
- Join kids under age 12 for trick-or-treating. If kids are mature enough to be out without supervision, tell them to stick to familiar areas that are well lit and trick-or-treat in groups.

### Costumes for a Safe Halloween

- Decorate costumes and bags (21844 Brian Bugge) with reflective tape or stickers and, if possible, choose light colors.
- Choose face paint and makeup whenever possible instead of masks, which can obstruct a child's vision.
- Have kids carry glow sticks or flashlights to help them see and be seen by drivers.
- When selecting a costume, make sure it is the right size to prevent trips and falls.

### Drive Extra Safely on Halloween

- Slow down and be especially alert in residential neighborhoods. Children are excited on Halloween and may move in unpredictable ways.
- Take extra time to look for kids at intersections, on medians and on curbs.
- Enter and exit driveways and alleys slowly and carefully.
- Get rid of any distractions - like your phone - in your car so you can concentrate on the road and your surroundings.
- Turn your headlights on earlier in the day to spot children from greater distances.
- Popular trick-or-treating hours are 5:30 p.m. to 9:30 p.m. Be especially alert for kids during those hours.

Source: [safekids.org](http://safekids.org)

UNITED STATES POSTAL SERVICE® (All Periodicals Publications Except Requester Publications)

Statement of Ownership, Management, and Circulation

1. Publication Title: Volts & Jolts

2. Issue Frequency: Ten Times Year

3. Issue Date: 9/22/2023

4. Issue Number: 663400

5. Annual Subscription Price: \$1.00

6. Complete Mailing Address of Known Office of Publication (not printer): PO Box 430 Red Lake County Red Lake Falls MN 56750-0430

7. Complete Mailing Address of Headquarters or General Business Office of Publisher (not printer): PO Box 430 Red Lake Falls MN 56750-0430

8. Full Name and Complete Mailing Address of Publisher, Editor, and Managing Editor (do not leave blank): Red Lake Electric Cooperative Inc PO Box 430 Red Lake Falls MN 56750-0430

9. Full Name and Complete Mailing Address of Editor, Editor, and Managing Editor (do not leave blank): Kelli Brateng PO Box 430 Red Lake Falls MN 56750-0430

10. Owner (Do not leave blank. If the publication is owned by a corporation, give the name and address of the corporation immediately followed by the names and addresses of all stockholders owning or holding 1 percent or more of the total amount of stock. If not owned by a corporation, give the names and addresses of the individual owners. If owned by a partnership or other unincorporated firm, give its name and address as well as those of each individual owner. If the publication is published by a nonprofit organization, give its name and address.): Red Lake Electric Cooperative Inc PO Box 430 412 International Drive S W Red Lake Falls MN 56750-0430

11. Known Bondholders, Mortgagees, and Other Security Holders Owning or Holding 1 Percent or More of Total Amount of Bonds, Mortgages, or Other Securities. If none, check box: [X] None

12. Tax Status (For completion by nonprofit organizations authorized to mail at nonprofit rates) (Check one): [X] Has Not Changed During Preceding 12 Months [ ] Has Changed During Preceding 12 Months (Publisher must submit explanation of change with this statement)

13. Publication Title: Volts & Jolts

14. Issue Frequency: Quarterly

15. Issue Date: September 2023

16. Issue Number: 4379

17. Total Number of Copies (Net press run): 4379

18. Total Paid Distribution (Sum of 18a and 18b): 4379

19. Total Free or Nominal Rate Distribution (Sum of 19a and 19b): 4379

20. Total Paid Distribution (Sum of 20a and 20b): 4379

21. Total Free or Nominal Rate Distribution (Sum of 21a and 21b): 4379

22. Total Paid Distribution (Sum of 22a and 22b): 4379

23. Total Free or Nominal Rate Distribution (Sum of 23a and 23b): 4379

24. Total Paid Distribution (Sum of 24a and 24b): 4379

25. Total Free or Nominal Rate Distribution (Sum of 25a and 25b): 4379

26. Total Paid Distribution (Sum of 26a and 26b): 4379

27. Total Free or Nominal Rate Distribution (Sum of 27a and 27b): 4379

28. Total Paid Distribution (Sum of 28a and 28b): 4379

29. Total Free or Nominal Rate Distribution (Sum of 29a and 29b): 4379

30. Total Paid Distribution (Sum of 30a and 30b): 4379

31. Total Free or Nominal Rate Distribution (Sum of 31a and 31b): 4379

32. Total Paid Distribution (Sum of 32a and 32b): 4379

33. Total Free or Nominal Rate Distribution (Sum of 33a and 33b): 4379

34. Total Paid Distribution (Sum of 34a and 34b): 4379

35. Total Free or Nominal Rate Distribution (Sum of 35a and 35b): 4379

36. Total Paid Distribution (Sum of 36a and 36b): 4379

37. Total Free or Nominal Rate Distribution (Sum of 37a and 37b): 4379

38. Total Paid Distribution (Sum of 38a and 38b): 4379

39. Total Free or Nominal Rate Distribution (Sum of 39a and 39b): 4379

40. Total Paid Distribution (Sum of 40a and 40b): 4379

41. Total Free or Nominal Rate Distribution (Sum of 41a and 41b): 4379

42. Total Paid Distribution (Sum of 42a and 42b): 4379

43. Total Free or Nominal Rate Distribution (Sum of 43a and 43b): 4379

44. Total Paid Distribution (Sum of 44a and 44b): 4379

45. Total Free or Nominal Rate Distribution (Sum of 45a and 45b): 4379

46. Total Paid Distribution (Sum of 46a and 46b): 4379

47. Total Free or Nominal Rate Distribution (Sum of 47a and 47b): 4379

48. Total Paid Distribution (Sum of 48a and 48b): 4379

49. Total Free or Nominal Rate Distribution (Sum of 49a and 49b): 4379

50. Total Paid Distribution (Sum of 50a and 50b): 4379

51. Total Free or Nominal Rate Distribution (Sum of 51a and 51b): 4379

52. Total Paid Distribution (Sum of 52a and 52b): 4379

53. Total Free or Nominal Rate Distribution (Sum of 53a and 53b): 4379

54. Total Paid Distribution (Sum of 54a and 54b): 4379

55. Total Free or Nominal Rate Distribution (Sum of 55a and 55b): 4379

56. Total Paid Distribution (Sum of 56a and 56b): 4379

57. Total Free or Nominal Rate Distribution (Sum of 57a and 57b): 4379

58. Total Paid Distribution (Sum of 58a and 58b): 4379

59. Total Free or Nominal Rate Distribution (Sum of 59a and 59b): 4379

60. Total Paid Distribution (Sum of 60a and 60b): 4379

61. Total Free or Nominal Rate Distribution (Sum of 61a and 61b): 4379

62. Total Paid Distribution (Sum of 62a and 62b): 4379

63. Total Free or Nominal Rate Distribution (Sum of 63a and 63b): 4379

64. Total Paid Distribution (Sum of 64a and 64b): 4379

65. Total Free or Nominal Rate Distribution (Sum of 65a and 65b): 4379

66. Total Paid Distribution (Sum of 66a and 66b): 4379

67. Total Free or Nominal Rate Distribution (Sum of 67a and 67b): 4379

68. Total Paid Distribution (Sum of 68a and 68b): 4379

69. Total Free or Nominal Rate Distribution (Sum of 69a and 69b): 4379

70. Total Paid Distribution (Sum of 70a and 70b): 4379

71. Total Free or Nominal Rate Distribution (Sum of 71a and 71b): 4379

72. Total Paid Distribution (Sum of 72a and 72b): 4379

73. Total Free or Nominal Rate Distribution (Sum of 73a and 73b): 4379

74. Total Paid Distribution (Sum of 74a and 74b): 4379

75. Total Free or Nominal Rate Distribution (Sum of 75a and 75b): 4379

76. Total Paid Distribution (Sum of 76a and 76b): 4379

77. Total Free or Nominal Rate Distribution (Sum of 77a and 77b): 4379

78. Total Paid Distribution (Sum of 78a and 78b): 4379

79. Total Free or Nominal Rate Distribution (Sum of 79a and 79b): 4379

80. Total Paid Distribution (Sum of 80a and 80b): 4379

81. Total Free or Nominal Rate Distribution (Sum of 81a and 81b): 4379

82. Total Paid Distribution (Sum of 82a and 82b): 4379

83. Total Free or Nominal Rate Distribution (Sum of 83a and 83b): 4379

84. Total Paid Distribution (Sum of 84a and 84b): 4379

85. Total Free or Nominal Rate Distribution (Sum of 85a and 85b): 4379

86. Total Paid Distribution (Sum of 86a and 86b): 4379

87. Total Free or Nominal Rate Distribution (Sum of 87a and 87b): 4379

88. Total Paid Distribution (Sum of 88a and 88b): 4379

89. Total Free or Nominal Rate Distribution (Sum of 89a and 89b): 4379

90. Total Paid Distribution (Sum of 90a and 90b): 4379

91. Total Free or Nominal Rate Distribution (Sum of 91a and 91b): 4379

92. Total Paid Distribution (Sum of 92a and 92b): 4379

93. Total Free or Nominal Rate Distribution (Sum of 93a and 93b): 4379

94. Total Paid Distribution (Sum of 94a and 94b): 4379

95. Total Free or Nominal Rate Distribution (Sum of 95a and 95b): 4379

96. Total Paid Distribution (Sum of 96a and 96b): 4379

97. Total Free or Nominal Rate Distribution (Sum of 97a and 97b): 4379

98. Total Paid Distribution (Sum of 98a and 98b): 4379

99. Total Free or Nominal Rate Distribution (Sum of 99a and 99b): 4379

100. Total Paid Distribution (Sum of 100a and 100b): 4379

101. Total Free or Nominal Rate Distribution (Sum of 101a and 101b): 4379

102. Total Paid Distribution (Sum of 102a and 102b): 4379

103. Total Free or Nominal Rate Distribution (Sum of 103a and 103b): 4379

104. Total Paid Distribution (Sum of 104a and 104b): 4379

105. Total Free or Nominal Rate Distribution (Sum of 105a and 105b): 4379

106. Total Paid Distribution (Sum of 106a and 106b): 4379

107. Total Free or Nominal Rate Distribution (Sum of 107a and 107b): 4379

108. Total Paid Distribution (Sum of 108a and 108b): 4379

109. Total Free or Nominal Rate Distribution (Sum of 109a and 109b): 4379

110. Total Paid Distribution (Sum of 110a and 110b): 4379

111. Total Free or Nominal Rate Distribution (Sum of 111a and 111b): 4379

112. Total Paid Distribution (Sum of 112a and 112b): 4379

113. Total Free or Nominal Rate Distribution (Sum of 113a and 113b): 4379

114. Total Paid Distribution (Sum of 114a and 114b): 4379

115. Total Free or Nominal Rate Distribution (Sum of 115a and 115b): 4379

116. Total Paid Distribution (Sum of 116a and 116b): 4379

117. Total Free or Nominal Rate Distribution (Sum of 117a and 117b): 4379

118. Total Paid Distribution (Sum of 118a and 118b): 4379

119. Total Free or Nominal Rate Distribution (Sum of 119a and 119b): 4379

120. Total Paid Distribution (Sum of 120a and 120b): 4379

121. Total Free or Nominal Rate Distribution (Sum of 121a and 121b): 4379

122. Total Paid Distribution (Sum of 122a and 122b): 4379

123. Total Free or Nominal Rate Distribution (Sum of 123a and 123b): 4379

124. Total Paid Distribution (Sum of 124a and 124b): 4379

125. Total Free or Nominal Rate Distribution (Sum of 125a and 125b): 4379

126. Total Paid Distribution (Sum of 126a and 126b): 4379

127. Total Free or Nominal Rate Distribution (Sum of 127a and 127b): 4379

128. Total Paid Distribution (Sum of 128a and 128b): 4379

129. Total Free or Nominal Rate Distribution (Sum of 129a and 129b): 4379

130. Total Paid Distribution (Sum of 130a and 130b): 4379

131. Total Free or Nominal Rate Distribution (Sum of 131a and 131b): 4379

132. Total Paid Distribution (Sum of 132a and 132b): 4379

133. Total Free or Nominal Rate Distribution (Sum of 133a and 133b): 4379

134. Total Paid Distribution (Sum of 134a and 134b): 4379

135. Total Free or Nominal Rate Distribution (Sum of 135a and 135b): 4379

136. Total Paid Distribution (Sum of 136a and 136b): 4379

137. Total Free or Nominal Rate Distribution (Sum of 137a and 137b): 4379

138. Total Paid Distribution (Sum of 138a and 138b): 4379

139. Total Free or Nominal Rate Distribution (Sum of 139a and 139b): 4379

140. Total Paid Distribution (Sum of 140a and 140b): 4379

141. Total Free or Nominal Rate Distribution (Sum of 141a and 141b): 4379

142. Total Paid Distribution (Sum of 142a and 142b): 4379

143. Total Free or Nominal Rate Distribution (Sum of 143a and 143b): 4379

144. Total Paid Distribution (Sum of 144a and 144b): 4379

145. Total Free or Nominal Rate Distribution (Sum of 145a and 145b): 4379

146. Total Paid Distribution (Sum of 146a and 146b): 4379

147. Total Free or Nominal Rate Distribution (Sum of 147a and 147b): 4379

148. Total Paid Distribution (Sum of 148a and 148b): 4379

149. Total Free or Nominal Rate Distribution (Sum of 149a and 149b): 4379

150. Total Paid Distribution (Sum of 150a and 150b): 4379

151. Total Free or Nominal Rate Distribution (Sum of 151a and 151b): 4379

152. Total Paid Distribution (Sum of 152a and 152b): 4379

153. Total Free or Nominal Rate Distribution (Sum of 153a and 153b): 4379

154. Total Paid Distribution (Sum of 154a and 154b): 4379

155. Total Free or Nominal Rate Distribution (Sum of 155a and 155b): 4379

156. Total Paid Distribution (Sum of 156a and 156b): 4379

157. Total Free or Nominal Rate Distribution (Sum of 157a and 157b): 4379

158. Total Paid Distribution (Sum of 158a and 158b): 4379

159. Total Free or Nominal Rate Distribution (Sum of 159a and 159b): 4379

160. Total Paid Distribution (Sum of 160a and 160b): 4379

161. Total Free or Nominal Rate Distribution (Sum of 161a and 161b): 4379

162. Total Paid Distribution (Sum of 162a and 162b): 4379

163. Total Free or Nominal Rate Distribution (Sum of 163a and 163b): 4379

164. Total Paid Distribution (Sum of 164a and 164b): 4379

165. Total Free or Nominal Rate Distribution (Sum of 165a and 165b): 4379

166. Total Paid Distribution (Sum of 166a and 166b): 4379

167. Total Free or Nominal Rate Distribution (Sum of 167a and 167b): 4379

168. Total Paid Distribution (Sum of 168a and 168b): 4379

169. Total Free or Nominal Rate Distribution (Sum of 169a and 169b): 4379

170. Total Paid Distribution (Sum of 170a and 170b): 4379

171. Total Free or Nominal Rate Distribution (Sum of 171a and 171b): 4379

172. Total Paid Distribution (Sum of 172a and 172b): 4379

173. Total Free or Nominal Rate Distribution (Sum of 173a and 173b): 4379

174. Total Paid Distribution (Sum of 174a and 174b): 4379

175. Total Free or Nominal Rate Distribution (Sum of 175a and 175b): 4379

176. Total Paid Distribution (Sum of 176a and 176b): 4379

177. Total Free or Nominal Rate Distribution (Sum of 177a and 177b): 4379

178. Total Paid Distribution (Sum of 178a and 178b): 4379

179. Total Free or Nominal Rate Distribution (Sum of 179a and 179b): 4379

180. Total Paid Distribution (Sum of 180a and 180b): 4379

181. Total Free or Nominal Rate Distribution (Sum of 181a and 181b): 4379

182. Total Paid Distribution (Sum of 182a and 182b): 4379

183. Total Free or Nominal Rate Distribution (Sum of 183a and 183b): 4379

184. Total Paid Distribution (Sum of 184a and 184b): 4379

185. Total Free or Nominal Rate Distribution (Sum of 185a and 185b): 4379

186. Total Paid Distribution (Sum of 186a and 186b): 4379

187. Total Free or Nominal Rate Distribution (Sum of 187a and 187b): 4379

188. Total Paid Distribution (Sum of 188a and 188b): 4379

189. Total Free or Nominal Rate Distribution (Sum of 189a and 189b): 4379

190. Total Paid Distribution (Sum of 190a and 190b): 4379

191. Total Free or Nominal Rate Distribution (Sum of 191a and 191b): 4379

192. Total Paid Distribution (Sum of 192a and 192b): 4379

193. Total Free or Nominal Rate Distribution (Sum of 193a and 193b): 4379

194. Total Paid Distribution (Sum of 194a and 194b): 4379

195. Total Free or Nominal Rate Distribution (Sum of 195a and 195b): 4379

196. Total Paid Distribution (Sum of 196a and 196b): 4379

197. Total Free or Nominal Rate Distribution (Sum of 197a and 197b): 4379

198. Total Paid Distribution (Sum of 198a and 198b): 4379

199. Total Free or Nominal Rate Distribution (Sum of 199a and 199b): 4379

200. Total Paid Distribution (Sum of 200a and 200b): 4379

201. Total Free or Nominal Rate Distribution (Sum of 201a and 201b): 4379

202. Total Paid Distribution (Sum of 202a and 202b): 4379

203. Total Free or Nominal Rate Distribution (Sum of 203a and 203b): 4379

204. Total Paid Distribution (Sum of 204a and 204b): 4379

205. Total Free or Nominal Rate Distribution (Sum of 205a and 205b): 4379

206. Total Paid Distribution (Sum of 206a and 206b): 4379

207. Total Free or Nominal Rate Distribution (Sum of 207a and 207b): 4379

208. Total Paid Distribution (Sum of 208a and 208b): 4379

209. Total Free or Nominal Rate Distribution (Sum of 209a and 209b): 4379

210. Total Paid Distribution (Sum of 210a and 210b): 4379

211. Total Free or Nominal Rate Distribution (Sum of 211a and 211b): 4379

212. Total Paid Distribution (Sum of 212a and 212b): 4379

213. Total Free or Nominal Rate Distribution (Sum of 213a and 213b): 4379

214. Total Paid Distribution (Sum of 214a and 214b): 4379

215. Total Free or Nominal Rate Distribution (Sum of 215a and 215b): 4379

216. Total Paid Distribution (Sum of 216a and 216b): 4379

217. Total Free or Nominal Rate Distribution (Sum of 217a and 217b): 4379

218. Total Paid Distribution (Sum of 218a and 218b): 4379

219. Total Free or Nominal Rate Distribution (Sum of 219a and 219b): 4379

220. Total Paid Distribution (Sum of 220a and 220b): 4379

221. Total Free or Nominal Rate Distribution (Sum of 221a and 221b): 4379

222. Total Paid Distribution (Sum of 222a and 222b): 4379

223. Total Free or Nominal Rate Distribution (Sum of 223a and 223b): 4379

224. Total Paid Distribution (Sum of 224a and 224b): 4379

225. Total Free or Nominal Rate Distribution (Sum of 225a and 225b): 4379

226. Total Paid Distribution (Sum of 226a and 226b): 4379

227. Total Free or Nominal Rate Distribution (Sum of 227a and 227b): 4379

228. Total Paid Distribution (Sum of 228a and 228b): 4379

229. Total Free or Nominal Rate Distribution (Sum of 229a and 229b): 4379

230. Total Paid Distribution (Sum of 230a and 230b): 4379

231. Total Free or Nominal Rate Distribution (Sum of 231a and 231b): 4379

232. Total Paid Distribution (Sum of 232a and 232b): 4379

233. Total Free or Nominal Rate Distribution (Sum of 233a and 233b): 4379

234. Total Paid Distribution (Sum of 234a and 234b): 4379

235. Total Free or Nominal Rate Distribution (Sum of 235a and 235b): 4379

236. Total Paid Distribution (Sum of 236a and 236b): 4379

237. Total Free or Nominal Rate Distribution (Sum of 237a and 237b): 4379

238. Total Paid Distribution (Sum of 238a and 238b): 4379

239. Total Free or Nominal Rate Distribution (Sum of 239a and 239b): 4379

240. Total Paid Distribution (Sum of 240a and 240b): 4379

241. Total Free or Nominal Rate Distribution (Sum of 241a and 241b): 4379

242. Total Paid Distribution (Sum of 242a and 242b): 4379

243. Total Free or Nominal Rate Distribution (Sum of 243a and 243b): 4379

244. Total Paid Distribution (Sum of 244a and 244b): 4379

245. Total Free or Nominal Rate Distribution (Sum of 245a and 245b): 4379

246. Total Paid Distribution (Sum of 246a and 246b): 4379

247. Total Free or Nominal Rate Distribution (Sum of 247a and 247b): 4379

248. Total Paid Distribution (Sum of 248a and 248b): 4379

249. Total Free or Nominal Rate Distribution (Sum of 249a and 249b): 4379

250. Total Paid Distribution (Sum of 250a and 250b): 4379

251. Total Free or Nominal Rate Distribution (Sum of 251a and 251b): 4379

252. Total Paid Distribution (Sum of 252a and 252b): 4379

253. Total Free or Nominal Rate Distribution (Sum of 253a and 253b): 4379

254. Total Paid Distribution (Sum of 254a and 254b): 4379

255. Total Free or Nominal Rate Distribution (Sum of 255a and 255b): 4379

256. Total Paid Distribution (Sum of 256a and 256b): 4379

257. Total Free or Nominal Rate Distribution (Sum of 257a and 257b): 4379

258. Total Paid Distribution (Sum of 258a and 258b): 4379

259. Total Free or Nominal Rate Distribution (Sum of 259a and 259b): 4379

260. Total Paid Distribution (Sum of 260a and 260b): 4379

261. Total Free or Nominal Rate Distribution (Sum of 261a and 261b): 4379

262. Total Paid Distribution (Sum of 262a and 262b): 4379

263. Total Free or Nominal Rate Distribution (Sum of 263a and 263b): 4379

264. Total Paid Distribution (Sum of 264a and 264b): 4379

265. Total Free or Nominal Rate Distribution (Sum of 265a and 265b): 4379

266. Total Paid Distribution (Sum of 266a and 266b): 4379

267. Total Free or Nominal Rate Distribution (Sum of 267a and 267b): 4379

268. Total Paid Distribution (Sum of 268a and 268b): 4379

269. Total Free or Nominal Rate Distribution (Sum of 269a and 269b): 4379

270. Total Paid Distribution (Sum of 270a and 270b): 4379

271. Total Free or Nominal Rate Distribution (Sum of 271a and 271b): 4379

272. Total Paid Distribution (Sum of 272a and 272b): 4379

273. Total Free or Nominal Rate Distribution (Sum of 273a and 273b): 4379

274. Total Paid Distribution (Sum of 274a and 274b): 4379

275. Total Free or Nominal Rate Distribution (Sum of 275a and 275b): 4379

276. Total Paid Distribution (Sum of 276a and 276b): 4379

277. Total Free or Nominal Rate Distribution (Sum of 277a and 277b): 4379

278. Total Paid Distribution (Sum of 278a and 278b): 4379

279. Total Free or Nominal Rate Distribution (Sum of 279a and 279b): 4379

280. Total Paid Distribution (Sum of 280a and 280b): 4379

281. Total Free or Nominal Rate Distribution (Sum of 281a and 281b): 4379

282. Total Paid Distribution (Sum of 282a and 282b): 4379

283. Total Free or Nominal Rate Distribution (Sum of 283a and 283b): 4379

284. Total Paid Distribution (Sum of 284a and 284b): 4379

285. Total Free or Nominal Rate Distribution (Sum of 285a and 285b): 4379

286. Total Paid Distribution (Sum of 286a and 286b): 4379

287. Total Free or Nominal Rate Distribution (Sum of 287a and 287b): 4379

288. Total Paid Distribution (Sum of 288a and 288b): 4379

289. Total Free or Nominal Rate Distribution (Sum of 289a and 289b): 4379

290. Total Paid Distribution (Sum of 290a and 290b): 4379

291. Total Free or Nominal Rate Distribution (Sum of 291a and 291b): 4379

292. Total Paid Distribution (Sum of 292a and 292b): 4379

293. Total Free or Nominal Rate Distribution (Sum of 293a and 293b): 4379

294. Total Paid Distribution (Sum of 294a and 294b): 4379

295. Total Free or Nominal Rate Distribution (Sum of 295a and 295b): 4379

296. Total Paid Distribution (Sum of 296a and 296b): 4379

297. Total Free or Nominal Rate Distribution (Sum of 297a and 297b): 4379

298. Total Paid Distribution (Sum of 298a and 298b): 4379

299. Total Free or Nominal Rate Distribution (Sum of 299a and 299b): 4379

300. Total Paid Distribution (Sum of 300a and 300b): 4379

301. Total Free or Nominal Rate Distribution (Sum of 301a and 301b): 4379

302. Total Paid Distribution (Sum of 302a and 302b): 4379

303. Total Free or Nominal Rate Distribution (Sum of 303a and 303b): 4379

304. Total Paid Distribution (Sum of 304a and 304b): 4379

305. Total Free or Nominal Rate Distribution (Sum of 305a and 305b): 4379

306. Total Paid Distribution (Sum of 306a and 306b): 4379

307. Total Free or Nominal Rate Distribution (Sum of 307a and 307b): 4

# ELECTRIC VALUE AT YOUR FINGERTIPS

**SAVE MORE** during the chilly season with off-peak heating, rebates and efficiency tips. You can find it all in one place at **ValueofElectricity.com!**

The Value of Electricity website is your home base for:

 Electric heating system  
**REBATES**

 Electric water heater  
**REBATES**

 Off-peak program  
**SAVINGS**

 Ideas for extra **ENERGY**  
**EFFICIENCY**

 Testimonials from  
your **THRIFTY**  
**NEIGHBORS**



**VALUE OF  
ELECTRICITY**



Scan the code and  
tap your utility to  
start **saving today!**

